



TEXTILE COLLECTION

Renaissance



# Renaissance

TEXTILE COLLECTION



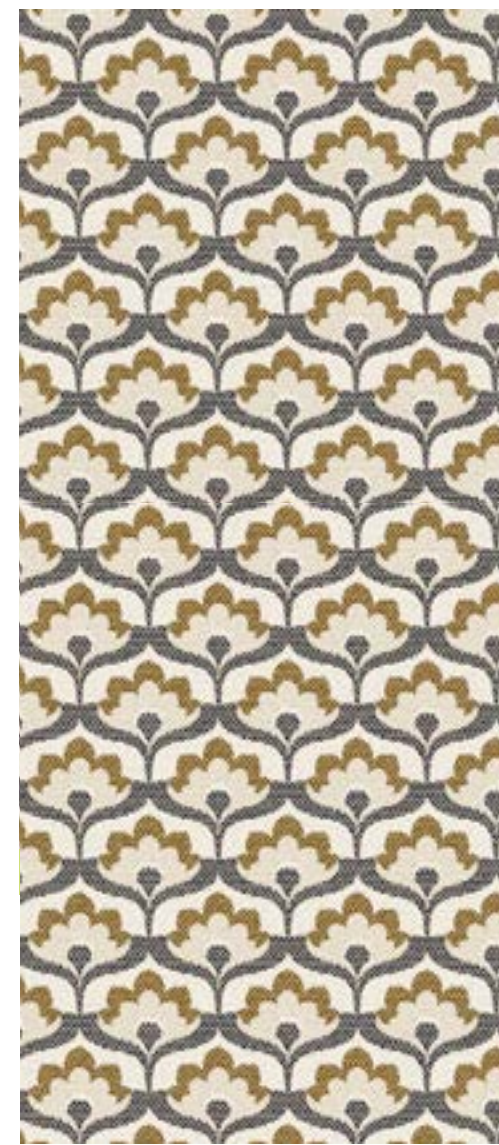




# Renaissance

TEXTILE COLLECTION





TORMES c/68



GALIZIA c/82



GRAB c/82



CELLINI c/82



SANZIO c/82



POSTIGO c/82



GRAB c/68



GALIZIA c/68



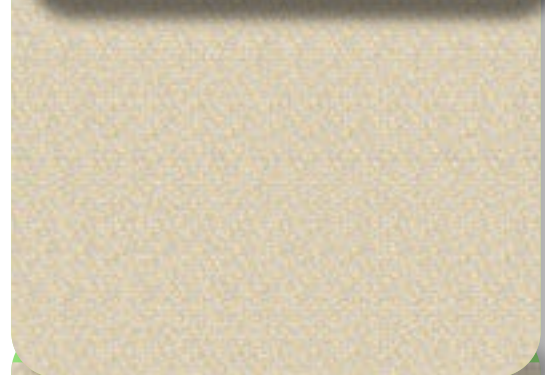
SANZIO c/68



CELLINI c/68



GRAB c/20



SANZIO c/20



POSTIGO c/20



CASAI c/68





↑ CASAI c/48 CASAI c/82 ↓



GRAB c/12

SANZIO c/12

POSTIGO c/12



GALIZIA c/82



CELLINI c/82



GRAB c/82

SANZIO c/82

POSTIGO c/82



TORMES c/48



GRAB c/48

SANZIO c/48

POSTIGO c/48



GALIZIA c/48



CELLINI c/48







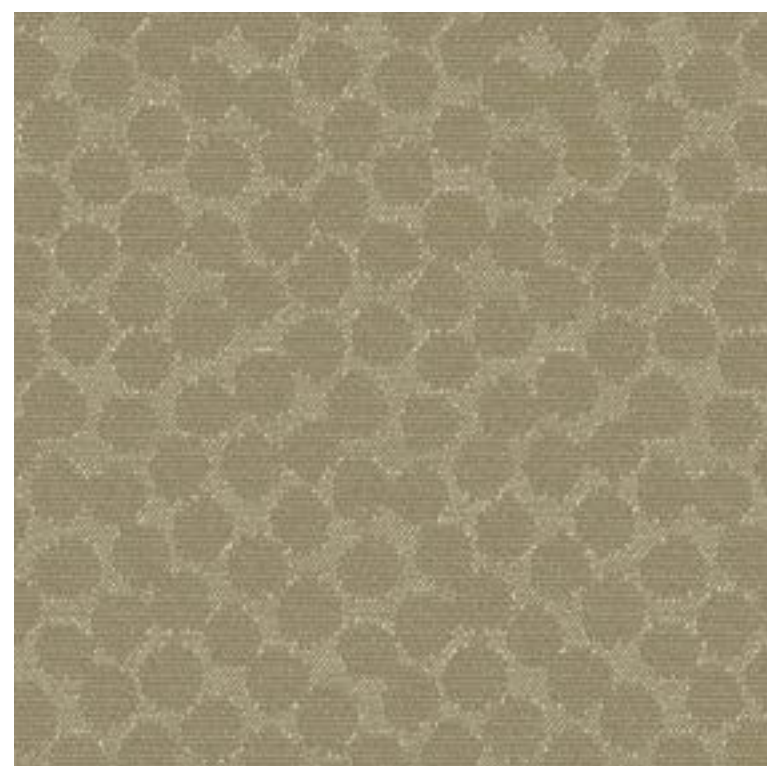
GALIZIA c/22



GRAB c/22



TORMES c/22



CELLINI c/22



SANZIO c/22



POSTIGO c/22



↑ CASAI c/12 CASAI c/22 ↓



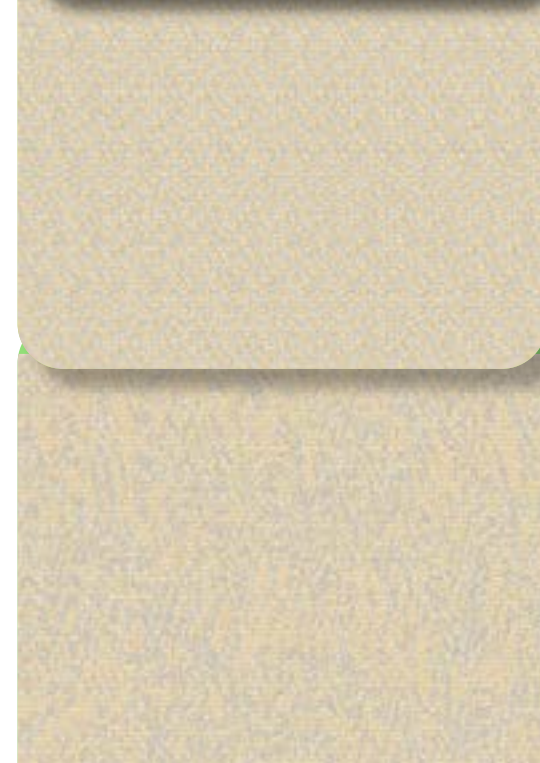
GRAB c/20



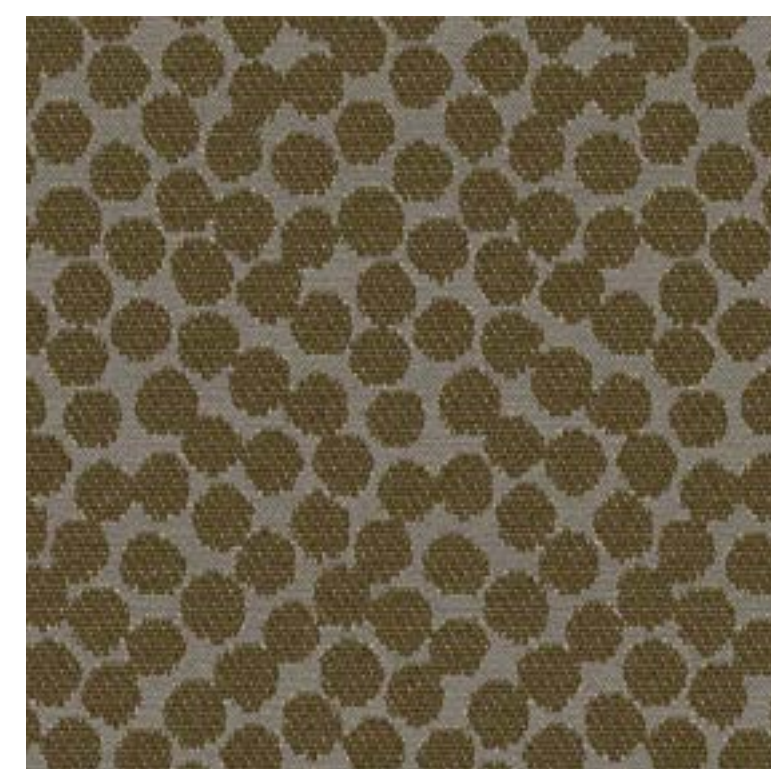
GALIZIA c/12



GRAB c/12



SANZIO c/20



CELLINI c/12



SANZIO c/12

POSTIGO c/12





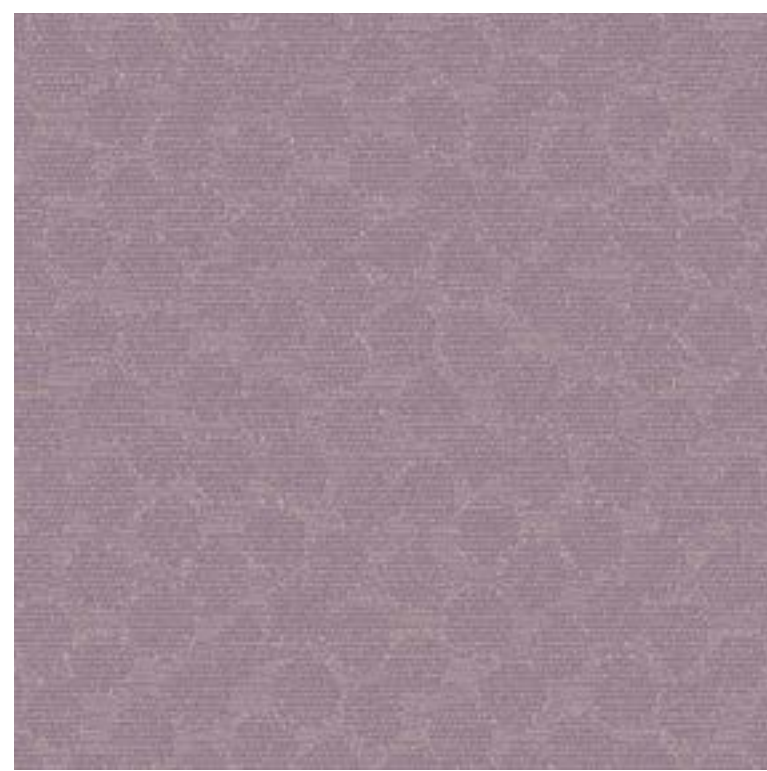
GALIZIA c/95



GRAB c/95



TORMES c/95



CELLINI c/95



SANZIO c/95



POSTIGO c/95



CASAI c/95



GRAB c/19



GALIZIA c/52



SANZIO c/19



CELLINI c/52



POSTIGO c/19



GRAB c/52



SANZIO c/52



POSTIGO c/52





GRAB c/54



GALIZIA c/54



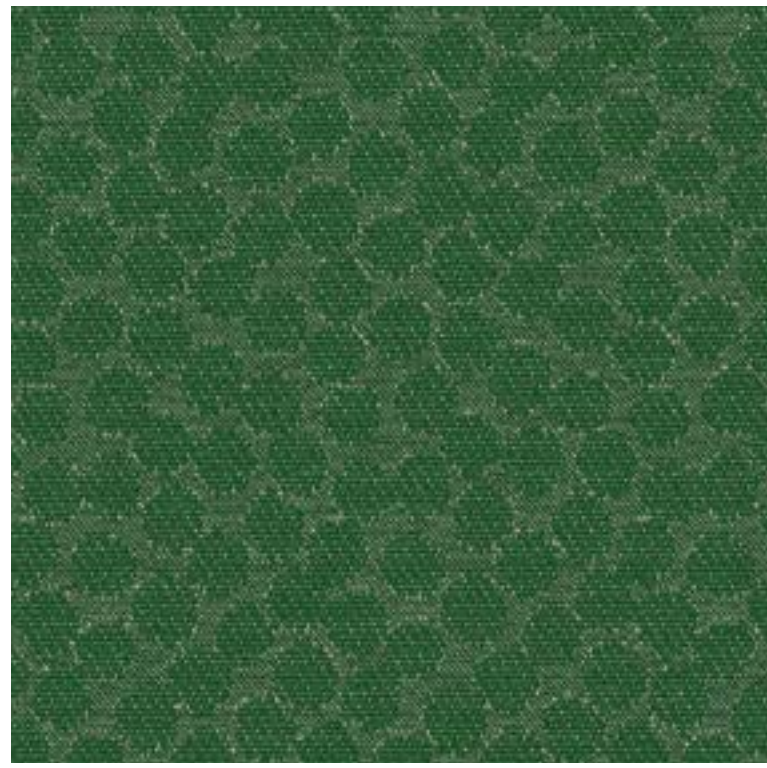
GRAB c/19



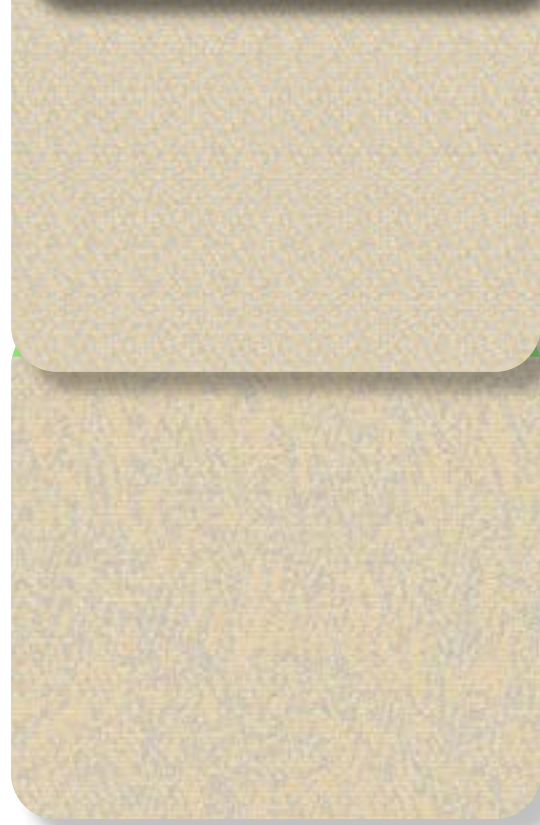
CASAI c/54



SANZIO c/54

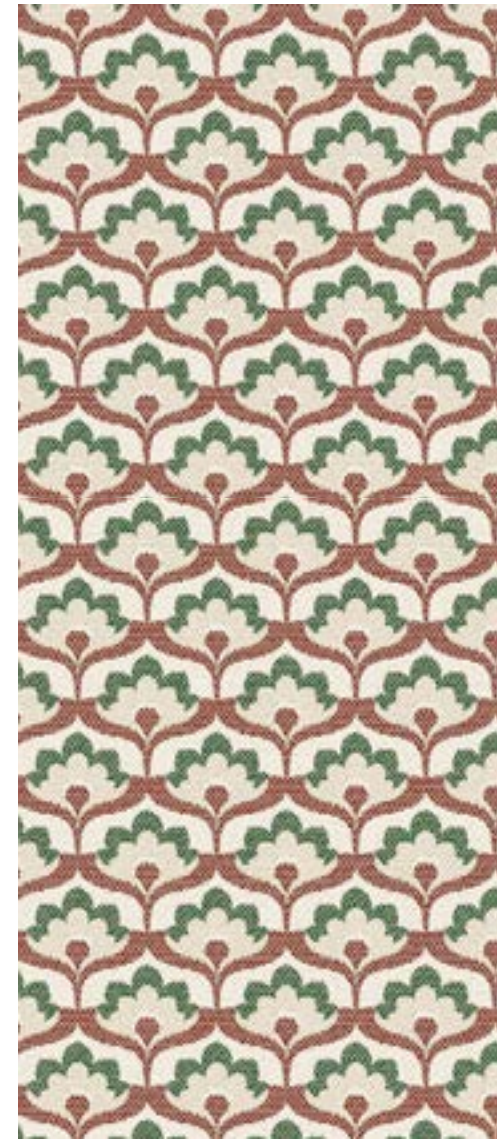


CELLINI c/54



SANZIO c/19

POSTIGO c/19



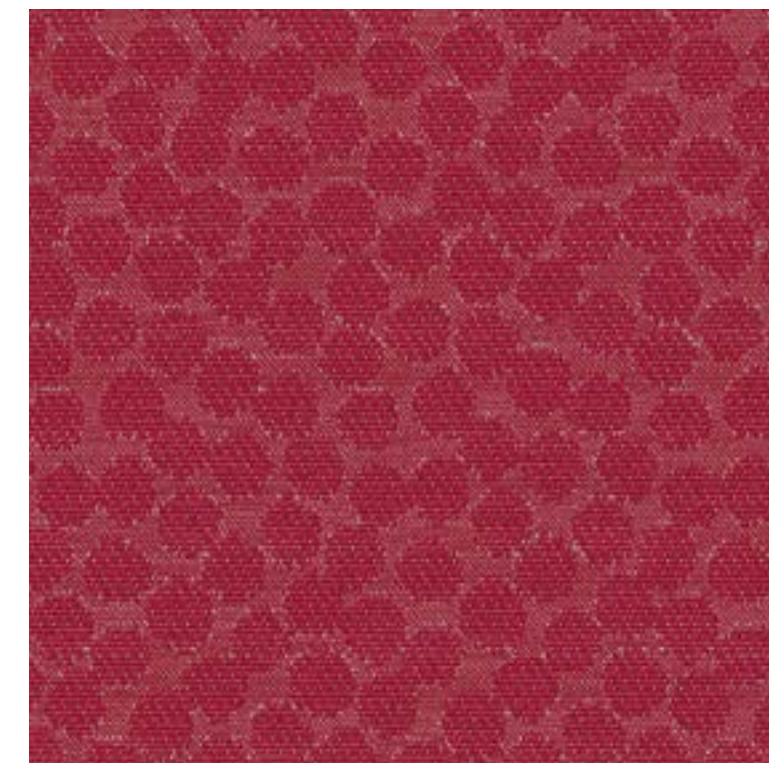
TORMES c/54



GALIZIA c/40



GRAB c/40



CELLINI c/40



SANZIO c/40



POSTIGO c/40



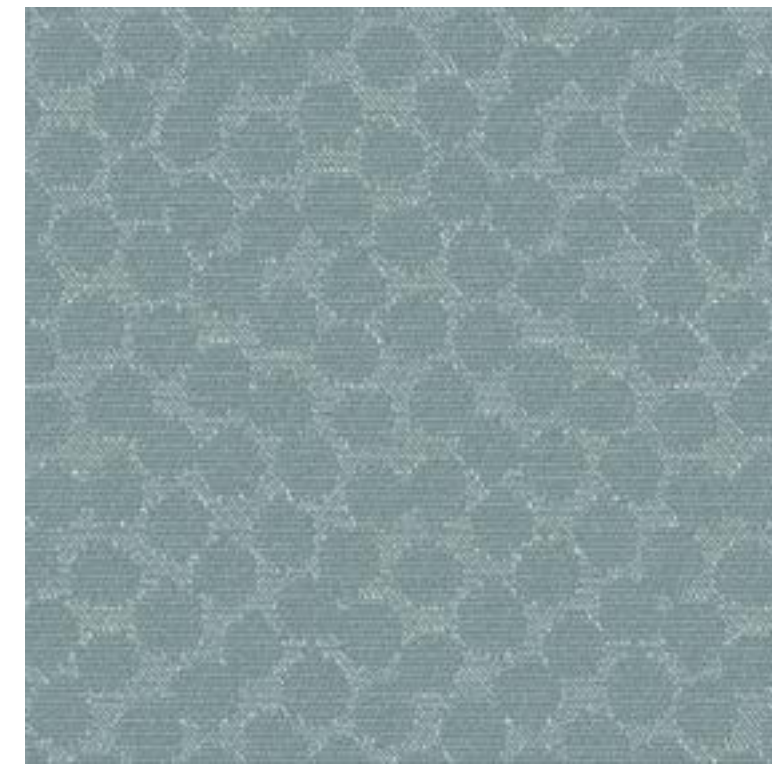




TORMES c/65



GALIZIA c/65



CELLINI c/65



SANZIO c/19

SANZIO c/65

SANZIO c/58



POSTIGO c/19

POSTIGO c/65

POSTIGO c/58



GALIZIA c/58



CELLINI c/58



GRAB c/26

GRAB c/65

GRAB c/58



↑ CASAI c/65

CASAI c/58 ↓





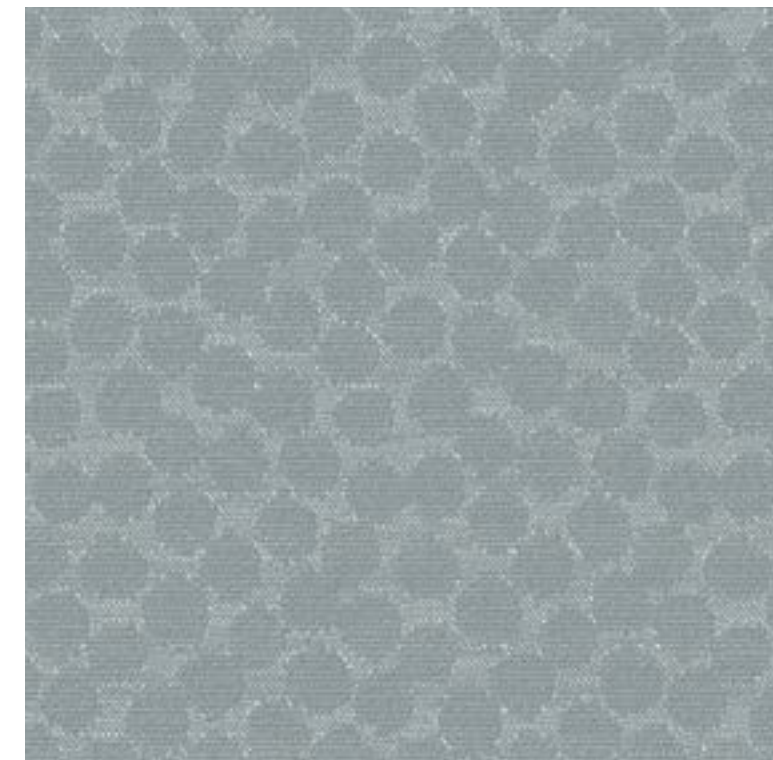
TORMES c/60



GALIZIA c/67



GRAB c/67



CELLINI c/67



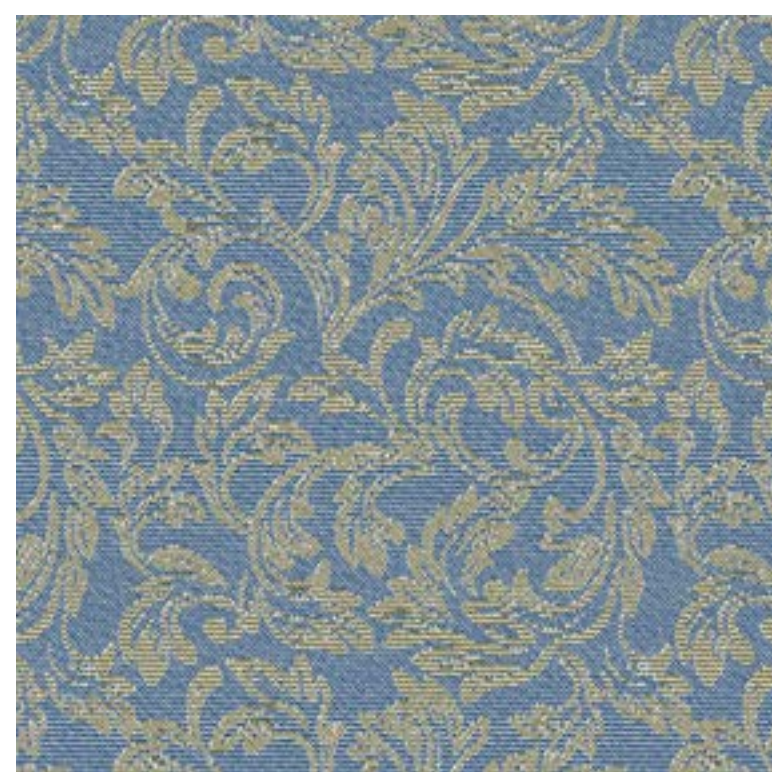
SANZIO c/67



POSTIGO c/67



GRAB c/60



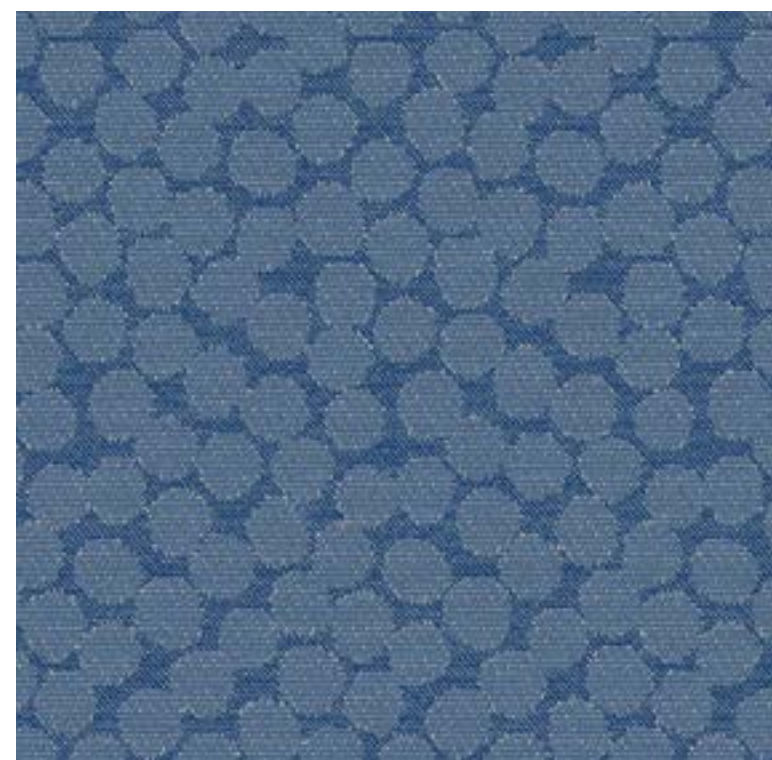
GALIZIA c/60



GRAB c/52



SANZIO c/60



CELLINI c/60



SANZIO c/52



POSTIGO c/52



CASAI c/60





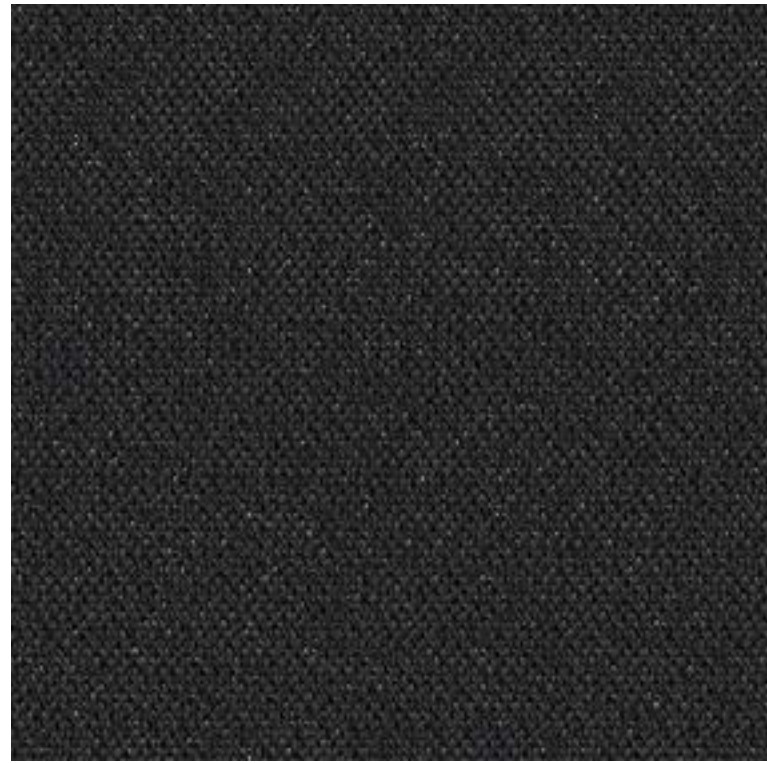
SANZIO c/82

POSTIGO c/82

CELLINI c/82



GALIZIA c/78



GRAB c/74



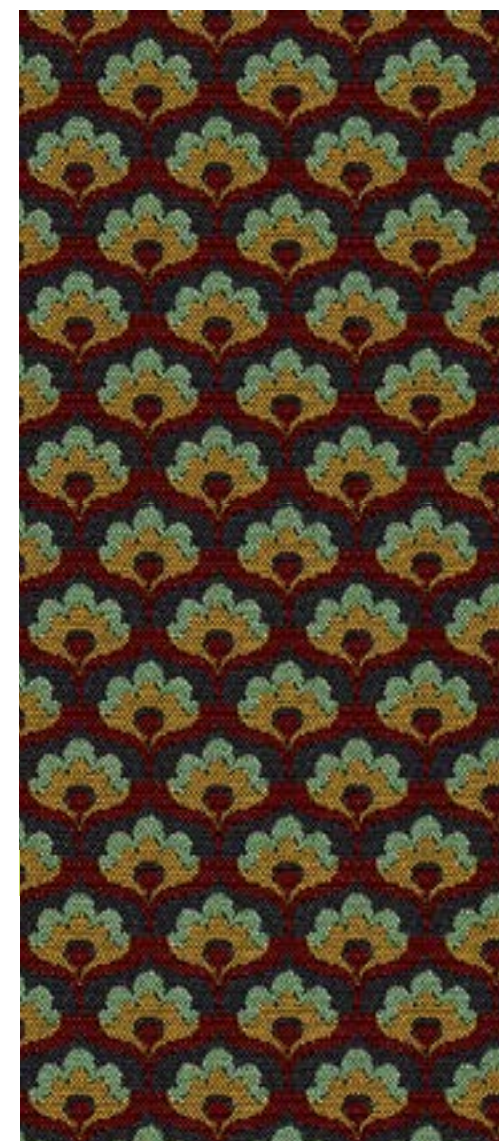
GRAB c/54

SANZIO c/57

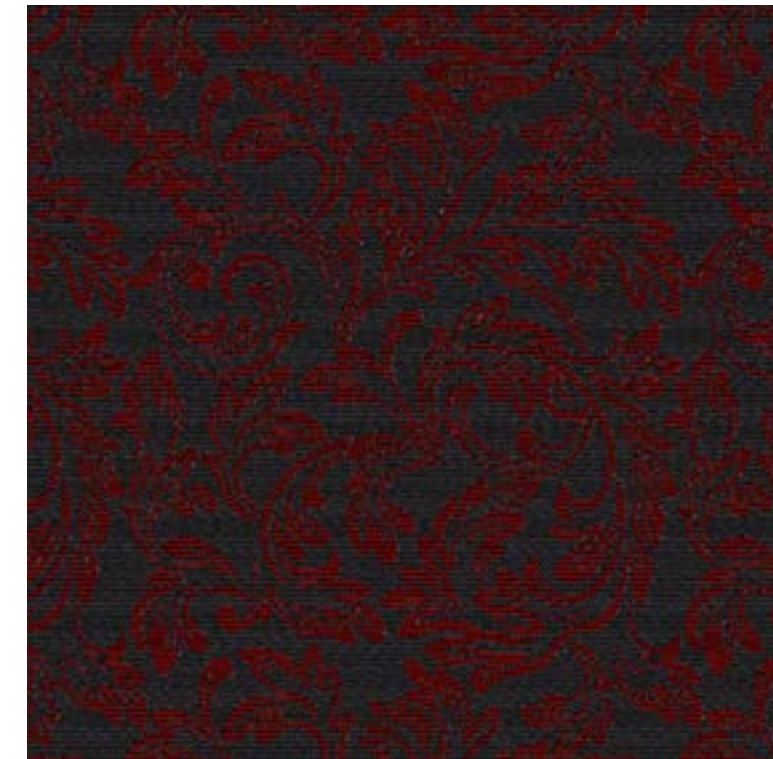
POSTIGO c/57



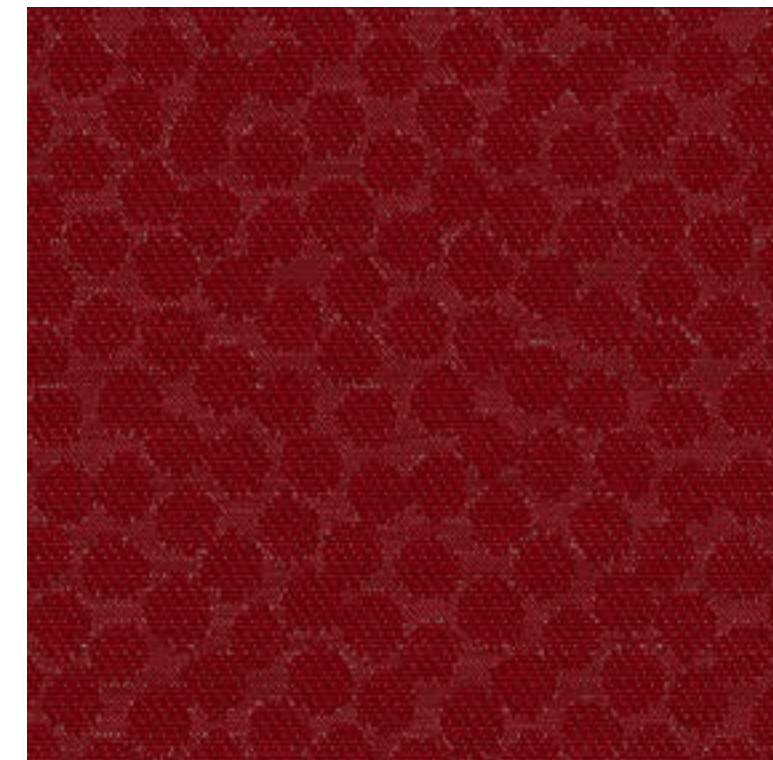
CASAI c/74



TORMES c/74



GALIZIA c/45



CELLINI c/45



GRAB c/40

SANZIO c/45

POSTIGO c/45



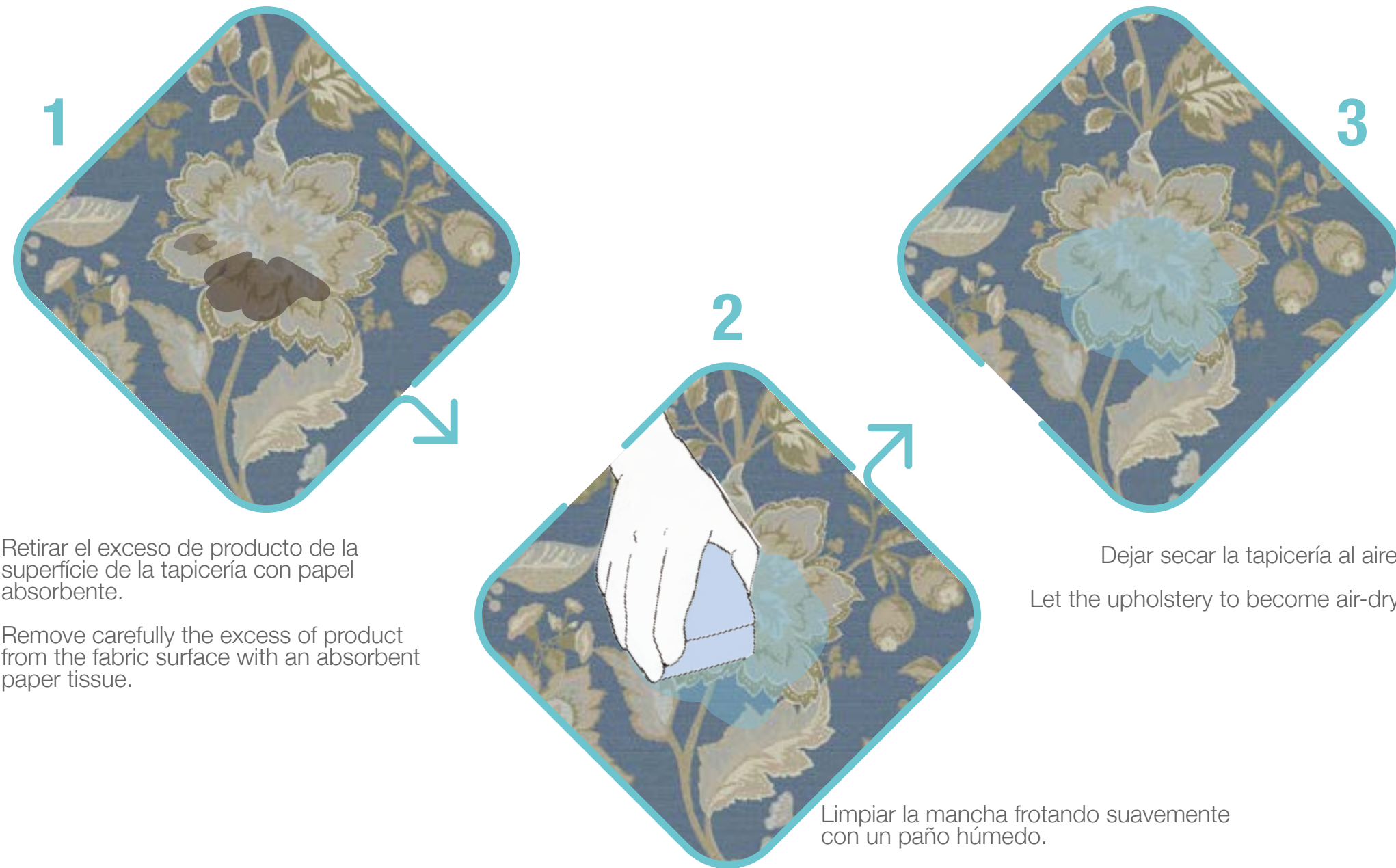


# Tecnología de fácil limpieza

## Technology for easy clean

Nuestro tratamiento PielSa Clean protege el tejido frente a manchas de líquidos en solo tres sencillos pasos.

Our Fast Clean treatment allows you to keep your fabric in excellent condition following three simple steps.



Retirar el exceso de producto de la superficie de la tapicería con papel absorbente.

Remove carefully the excess of product from the fabric surface with an absorbent paper tissue.

Dejar secar la tapicería al aire.  
Let the upholstery to become air-dry.

Limpiar la mancha frotando suavemente con un paño húmedo.

Clean off the stain, rubbing it gently with a damp cloth until it vanishes.

Para mantener y cuidar el tejido frente a manchas grandes, persistentes o grasas, se recomienda lavarlo a máquina siguiendo las instrucciones.

In order to keep the fabric clean when facing big-sized, greasy or persistent stains, we recommend following the cleaning instructions detailed in the fabric technical datasheet.



Escanea este código QR para ver nuestros videos de limpieza con diferentes tipos de manchas.



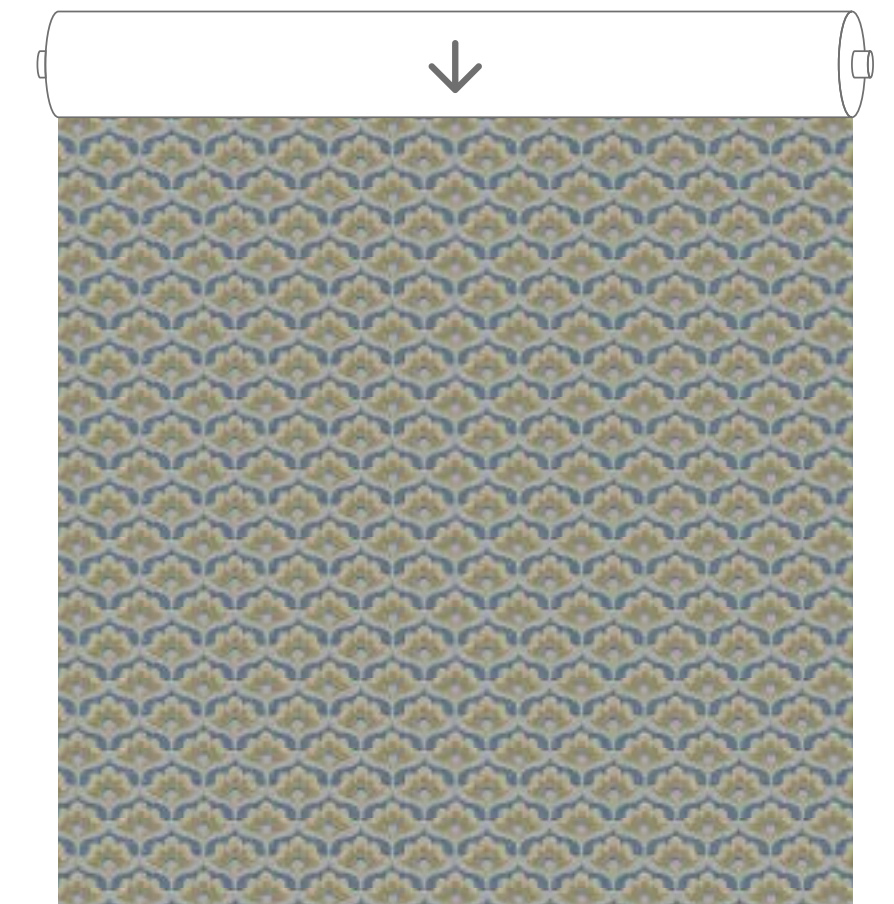
Scan this QR code to watch our cleaning videos with different types of stains.

# Renaissance

TEXTILE COLLECTION



CASAÍ. Rapport 70x74,6 cm

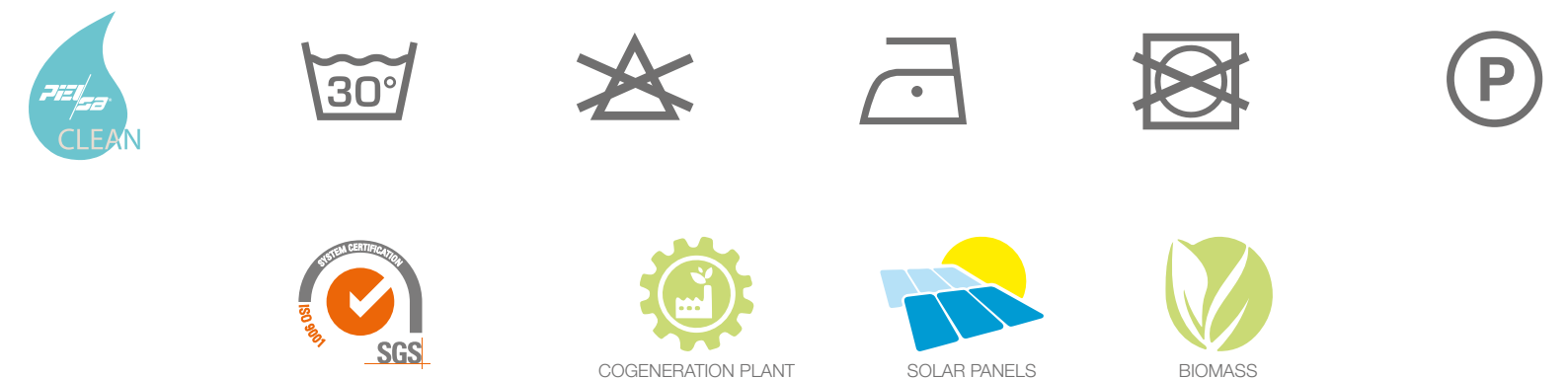


TORMES. Rapport 3,9x4,4 cm

### CARACTERÍSTICAS TÉCNICAS TECHNICAL CHARACTERISTICS CARACTÉRISTIQUES TECHNIQUES

NOMBRE NAME NOM	COMPOSICIÓN COMPOSITION COMPOSITION	ANCHO (cm) WIDTH (cm) LARGEUR (cm)	GRAMAJE (g/m²) WEIGHT (g/m²) GRAMMAGE (g/m²)	ABRASIÓN (ciclos) ABRASION TEST (cycles) TEST D'ABRASION (cycles)	PILLING PILLING PILLING	COSTURAS (u/t) SEAM STRENGTH (warp/weft) RESISTANCE DES COUTURES (c/t)
CASAÍ	54%PES-46%CO	140	412	20.000	3	4,7/2,8
TORMES	54%PES-46%CO	140	411	20.000	4	3,2/2,5
GALIZIA	67%PES-33%CO	140	286	20.000	3-4	4,2/4,7
CELLINI	42 %PAN-34%PES-24%CO	140	460	28.000	5	2,8/2,0
POSTIGO	52%PAN-48%PES	140	324	25.000	5	3,3/2,7
SANZIO	52%PAN-48%PES	140	350	25.000	5	3/2,7
GRAB	80%PES-20%CO	140	493	55.000	5	5/2,7

ABRASION TEST: UNE-EN ISO 12947-2 PILLING: UNE-EN ISO 12945-2 SEAM STRENGTH: UNE-EN ISO 13936-2







## Tejiendo por un mundo mejor

Piel SA, es una empresa comprometida con las personas, la calidad, el servicio y el planeta.

## Weaving for a better world

Piel SA, is a company committed to people, quality, service and the planet.



Piel SA, fundada en 1976, es una empresa textil con una área de producción de más de 70.000m<sup>2</sup>, certificada por SGS para la Norma de Calidad y Satisfacción del Cliente ISO 9001: 2015.

Piel SA, founded in 1976, is a textile company with 70.000m<sup>2</sup> production area, certified by SGS for the Quality and Customer Satisfaction Standard ISO 9001:2015.

[www.pielsa.es](http://www.pielsa.es)